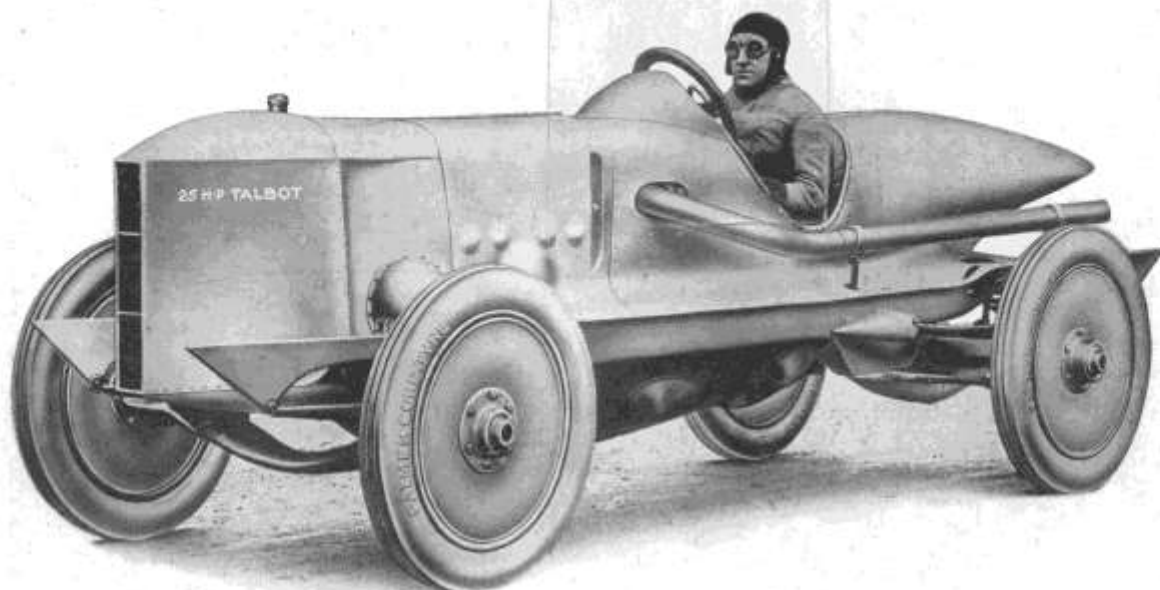


Irish Free State

1924

THE
INVINCIBLE
TALBOT

THE INVINCIBLE TALBOT



The 25 h.p. TALBOT driven by Mr. Percy Lambert.

THE FIRST CAR IN THE WORLD TO COVER 100 MILES IN THE HOUR.



CLEMENT TALBOT LIMITED

Barlby Road, Ladbroke Grove, LONDON, W.10.

Telephone: PARK 5000.

Telegrams: "CLEMTAL, NORKENS, LONDON."

Repair Department:

177, THE VALE, ACTON, W.3.

Telephone: CHISWICK 800.

Telegrams: "VOITURANTE, ACT, LONDON."

Export Department:

12, PRINCES STREET, HANOVER SQ., W.1.

Telephone: MAYFAIR 6280/1.

Telegrams: "STEDX, LONDON."



LIST OF STANDARD MODELS AND PRICES
FOR
THE IRISH FREE STATE

8/18 h.p. Four-cylinder Chassis	£305
Two-seater	£340
Coupé	£420
10/23 h.p. Four-cylinder Chassis	£345
Two-seater	£395
Four-seater	£395
Coupé	£490
Saloon	£530
Weymann Saloon	£530
12/30 h.p. Six-cylinder Chassis	£500
Two-seater	£610
Four-seater	£610
Coupé	£665
"All-Weather"	£710
Saloon	£800
Weymann Saloon	£800

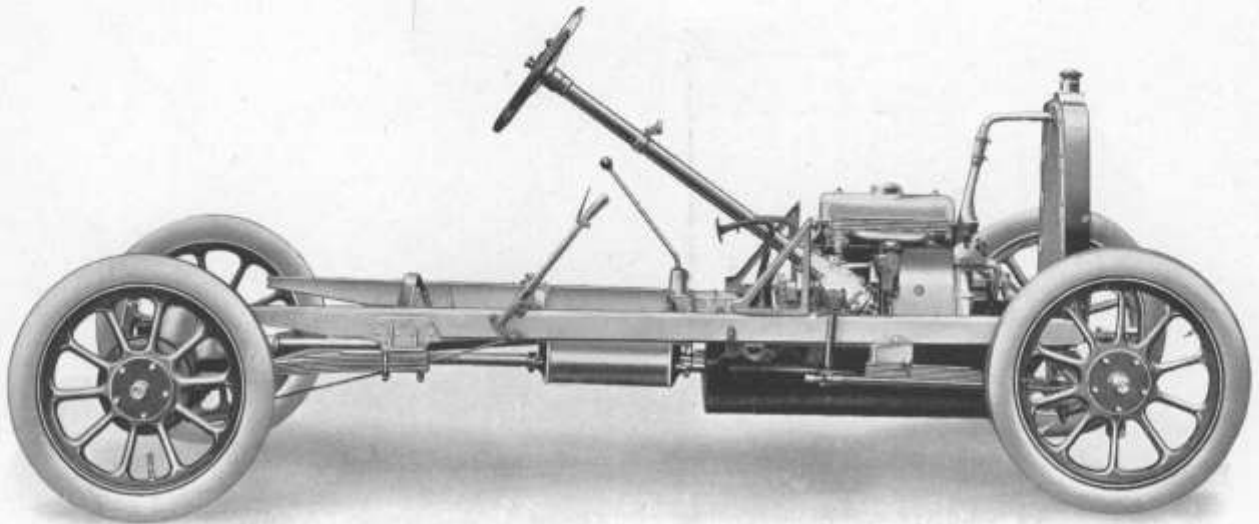


INTRODUCTION

THE SECRET OF TALBOT SUCCESS is—and always has been—Reliability, combined with excellence of design, construction and durability, speed, economy and comfort.

The three models enumerated in this catalogue reveal many improvements in detail, and these racing-tested Coatalen-designed TALBOTS—backed by all that the famous name implies—are incomparably the best value obtainable. All the qualities which are synonymous with efficiency and service are linked with economical motoring,—a point which is worthy of consideration with most of us at the present time.

Awards have been won for speed, hill-climbing, and efficiency in many open trials all over the country, which goes to prove that these latest models are upholding the splendid traditions of The INVINCIBLE TALBOT.



8/18 h.p. 4-Cylinder Chassis -

Detailed Specification

ENGINE.—4-cylinder monobloc casting, forming, with the open clutch pit and gear box, a single unit.

Bore—57.
Stroke—95.

c.c.—969.
R.A.C. rating—8 H.P.

Overhead valves are fitted in the detachable head and operated by push rods and rockers, fitted with simple means of adjustment. An oil tight aluminium cover encloses the whole of the valve gear and forms a chamber which is in direct communication with the crankcase, thus allowing the valve gear to work in an oil vapour and additionally oil is fed, under pressure, to the rockers through the hollow rocker bearing shaft.

CRANKSHAFT which is of large diameter is carried in three bearings attached to the upper half of the crankcase. Lubrication is effected by oil being forced by a gear pump through the crankshaft, which is hollow, and so fed to each journal and big-end bearing.

PISTONS are of special aluminium alloy, very light in weight, and thus eliminating all vibration.

DYNAMO positively driven in tandem with the distributor.

IGNITION is the Delco Remy high tension coil and battery type. The distributor and contact breaker being mounted in a most accessible position. High tension magneto can be substituted at an extra cost of
If required to be fitted after delivery has been taken, the extra cost is

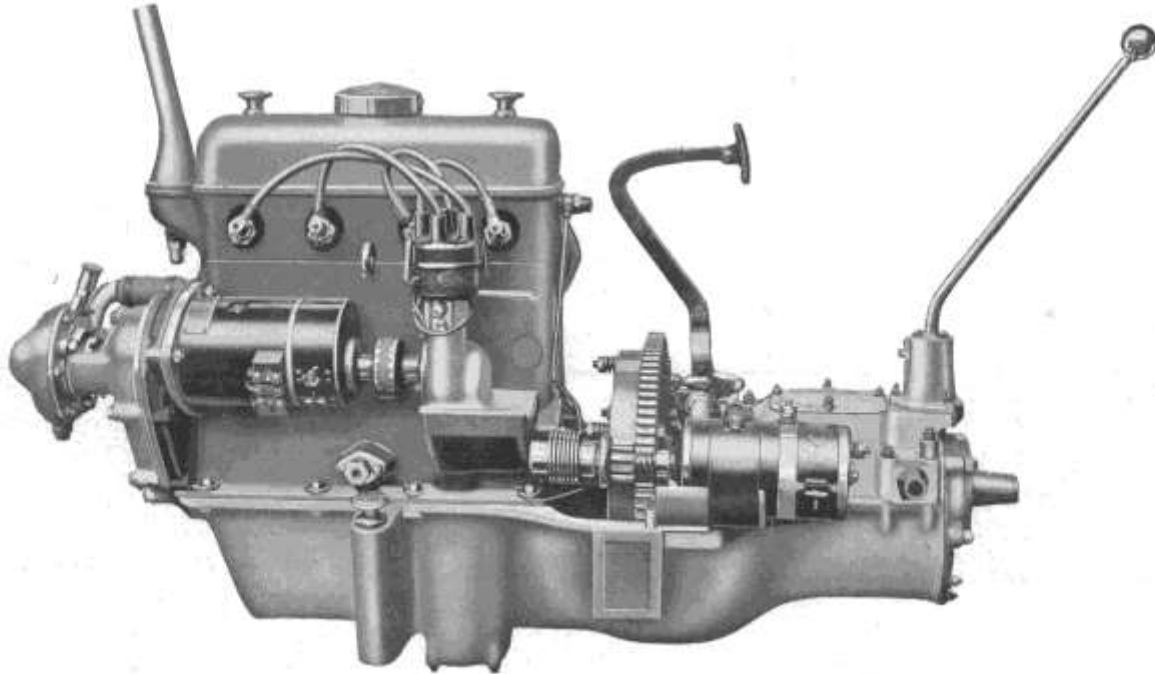
COOLING is effected by large honeycomb radiator and centrifugal water circulating pump. A fan can be fitted for tropical countries at an extra cost of
If required to be fitted after delivery has been taken, the extra cost is

CARBURETTOR.—Zenith or Claudel Carburettor are fitted to an inlet pipe of special design with hot spot cast integral with the exhaust manifold. This arrangement gives the best possible carburation, as the mixture is warmed before being delivered to the cylinders.

STARTER.—Electric starter is fitted, the pinion of which engages with teeth cut on the fly-wheel.

LUBRICATION is of the forced feed hollow crankshaft type with a gauge on the dash board indicating the pressure and a dipper on the near side of the engine, showing the amount of oil in the sump.

CLUTCH.—This is mounted in the fly-wheel and is of the single disc ferodo lined type, running dry. Adjustments can be easily carried out as the clutch runs in an open clutch pit.



8/18 h.p. 4-Cylinder Engine Unit

Detailed Specification—Continued

GEAR BOX is a single unit with the engine, and is provided with three forward speeds and one reverse. Short shafts of large diameter carry the gears, thus avoiding any tendency to noisiness on the intermediate gears. Ball bearings are fitted throughout and provision for lubrication on the rear universal joint is made. Speedometer drive is fitted. Central change is standard. Right-hand change can be fitted at an extra cost of If required to be fitted after delivery has been taken, the extra cost is

BACK AXLE.—Banjo type pressed steel with aluminium inspection cap, forming a very strong, and at the same time, light unit. The final drive is by spiral bevel. Ball bearings are fitted throughout.

FRONT AXLE is the straight type made from "H" section special alloy steel, steering pivots are of ample dimensions and adequate means of lubrication is provided. The hubs are mounted on ball races.

SPRINGING is by $\frac{1}{4}$ elliptic front and rear.

BRAKES.—Very efficient internal expanding type ferodo lined brakes are fitted to the rear wheels.

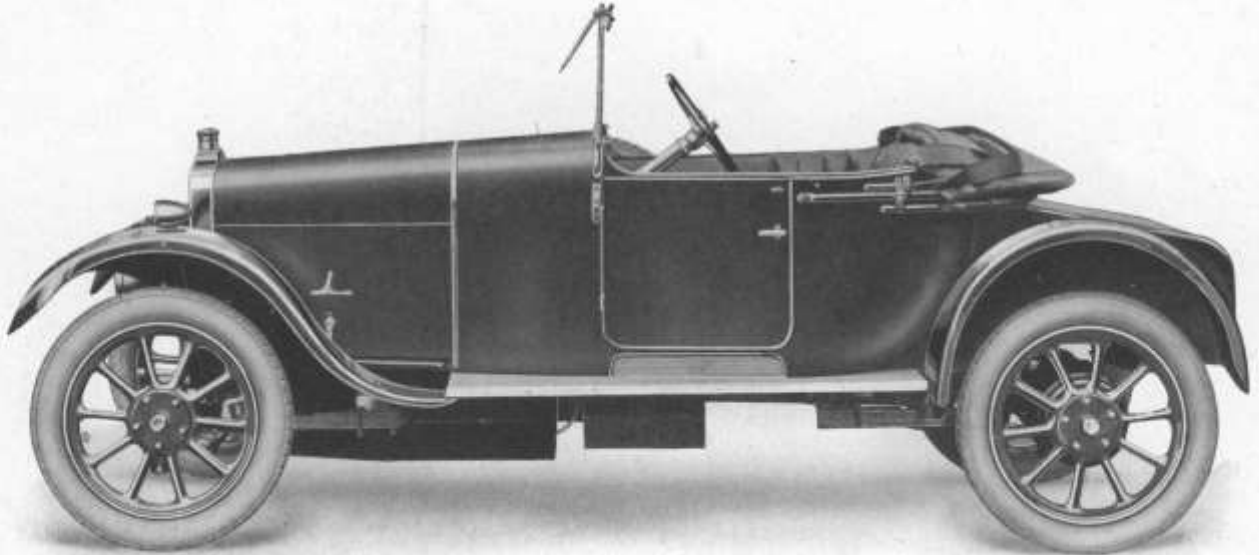
STEERING is of the irreversible worm and nut type. All moving parts being of ample dimensions.

WHEELS.—Detachable steel artillery wheels are fitted with Dunlop 700×80 Clipper cord tyres.

FRAME of pressed steel, inswept at the front to allow of adequate steering lock.

PRINCIPAL DIMENSIONS.

Wheelbase	8 ft. 1 in.
Track	3 ft. 11 $\frac{1}{4}$ in.
Length overall	10 ft. 3 in.
Width overall	4 ft. 6 in.
Ground clearance	6 in.
Gear ratios	Top	2nd	1st	Rev.
				4·5	8·5	16·2	16·2
Tyre sizes	700×80 mm.
Weight of chassis	7 $\frac{1}{2}$ cwt.



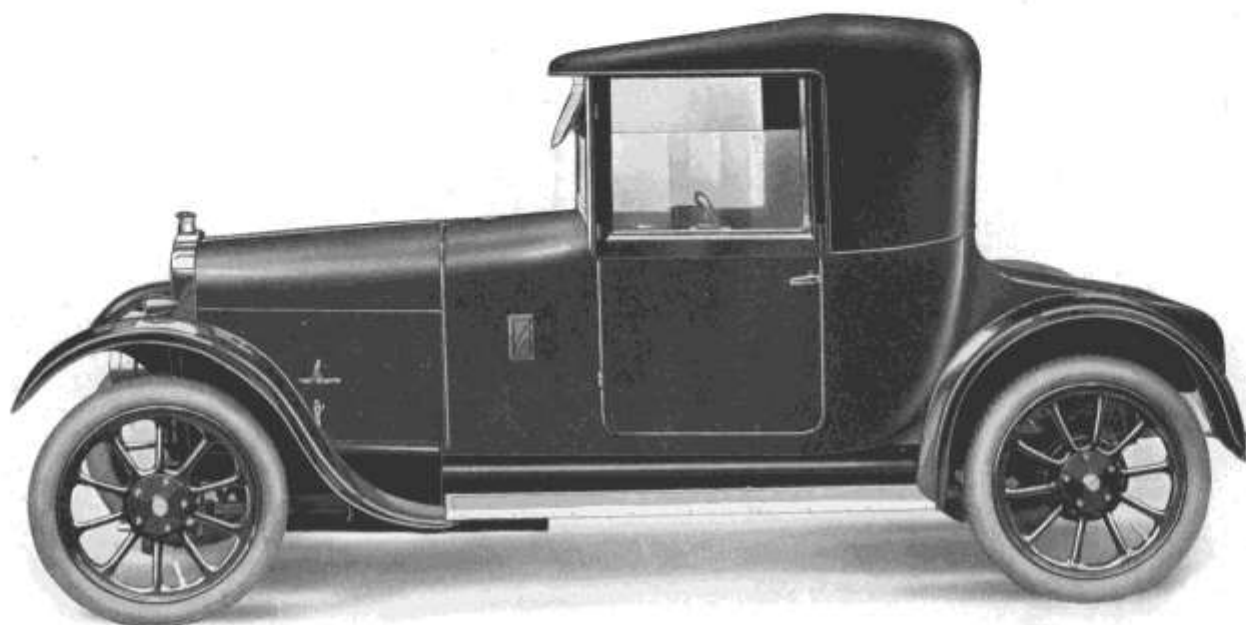
8/18 h.p. Model "B" 2-Seater - . . .

8-18 h.p. chassis fitted with 2-seater body, provided with dickey seat, giving ample leg room, double folding wind screen, hood, side curtains, operating with the door, with convenient storage for same, complete tool equipment, spare wheel and cord tyre, 5 lamps, electric lighting and starting, electric horn, speedometer.

COLOURS—Dark Blue and Wine.

UPHOLSTERY—Dark Blue.

R.A.C. Rating, 8 h.p.



8/18 h.p. Model "C" Coupé - - -

8-18 h.p. chassis fitted with first-class coachbuilt coupé body, collapsible head, covered in best quality leather, lined inside with cloth, fitted with ample back light, 2 doors fitted with frameless windows, double folding wind screen, dickey seat, complete tool equipment, spare wheel and cord tyre, 5 lamps, electric lighting and starting, electric horn, speedometer, clock, step mat.

COLOURS—Dark Grey, Blue or Wine.

UPHOLSTERY—Dark Blue.

R.A.C. Rating, 8 h.p.



Some Opinions of the Popular Talbot "8."

"The car behaves perfectly and you may be interested to hear my tyres have all done 6,000 miles, and the worst of them is good for at least another 1,000."

Capt. C. J. O., July 16, 1923.

"I find it a very easy car to manage and keep in order. We have no man so I do it all myself, and for a lady this easy management is invaluable."

E. M. A., Nov., 1922.

"I recently purchased an 8 h.p. light car of your manufacture which has been so far a revelation to me of what a really good light car can be. I have had a number of years of experience with various makes, but have never yet had a car compare with it in any direction."

A. H. B., Jan., 1923.

"I am extremely pleased with the little bus. In fact, have never handled anything so exclusively fascinating to drive coupled with efficiency and soundness throughout."

C. H. B., July, 1923.

"You may be interested to hear that this car (8 h.p. 12674) at a hill climb competition held near Enniskillen a few days ago in the Class C, cars under 1,500 c.c., won easily, and although it was the smallest engined car in the competition, actually made fastest time."

E. E.

"I may state the car is doing wonderfully well, with plenty of admirers, and questions of its abilities, which we have proved great and wonderful for so small a car. It has gone everywhere we have desired to go."

F. G., Oct., 1922.

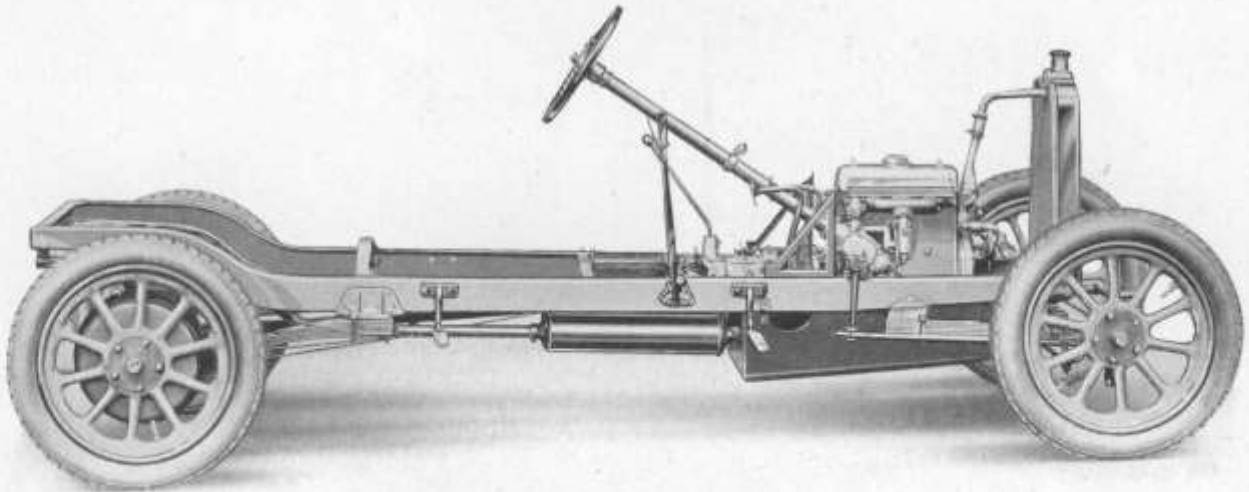
"We are delighted with the car and have not yet met its equal. For hill climbing and steadiness I am convinced it cannot be beaten."

Mrs. R. L. R., Dec., 1922.



*Charming
Pictures of
the Talbot "8"*





10/23 h.p. 4-Cylinder Chassis -

Detailed Specification

ENGINE.—4-cylinder monobloc casting, forming with the open clutch pit and gear box, a single unit.

Bore—60.
Stroke—95.

c.c.—1,073.
R.A.C. rating—8.9 h.p.

Overhead valves are fitted in the detachable head and operated by push rods and rockers, fitted with simple means of adjustment. An oil tight aluminium cover encloses the whole of the valve gear and forms a chamber which is in direct communication with the crankcase, thus allowing the valve gear to work in an oil vapour and additionally oil is fed, under pressure, to the rockers through the hollow rocker bearing shaft.

CRANKSHAFT, which is of large diameter, is carried in three bearings attached to the upper half of the crankcase. Lubrication is effected by oil being forced by a gear pump through the crankshaft which is hollow and so fed to each journal and big-end bearing.

PISTONS are of special aluminium alloy, very light in weight, and thus eliminating all vibration.

DYNAMO positively driven in tandem with the distributor.

IGNITION is the Delco Remy high tension coil and battery type. The distributor and contact breaker being mounted in a most accessible position. High tension magneto can be substituted at an extra cost of £10. If required to be fitted after delivery has been taken, the extra cost is £15.

COOLING is effected by large honeycomb radiator and centrifugal water circulating pump. A fan can be fitted for tropical countries at an extra cost of £10. If required to be fitted after delivery has been taken, the extra cost is £15.

CARBURETTOR.—Zenith or Claudel Carburettor are fitted to an inlet pipe of special design with hot spot cast integral with the exhaust manifold. This arrangement gives the best possible carburation, as the mixture is warmed before being delivered to the cylinders.

STARTER.—Electric starter is fitted, the pinion of which engages with teeth cut on the fly-wheel.

LUBRICATION is of the forced feed hollow crankshaft type with a gauge on the dash board indicating the pressure and a dipper on the near side of the engine, showing the amount of oil in the sump.

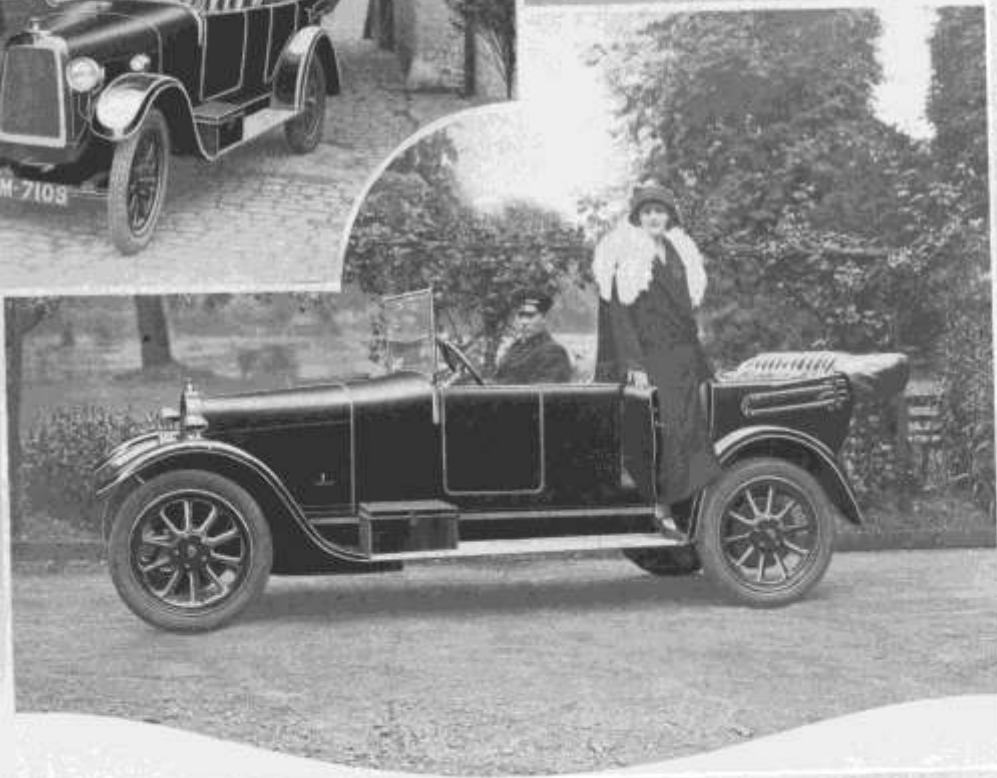
CLUTCH.—This is mounted in the fly-wheel and is of the single disc ferodo lined type, running dry. Adjustments can be easily carried out as the clutch runs in an open clutch pit.

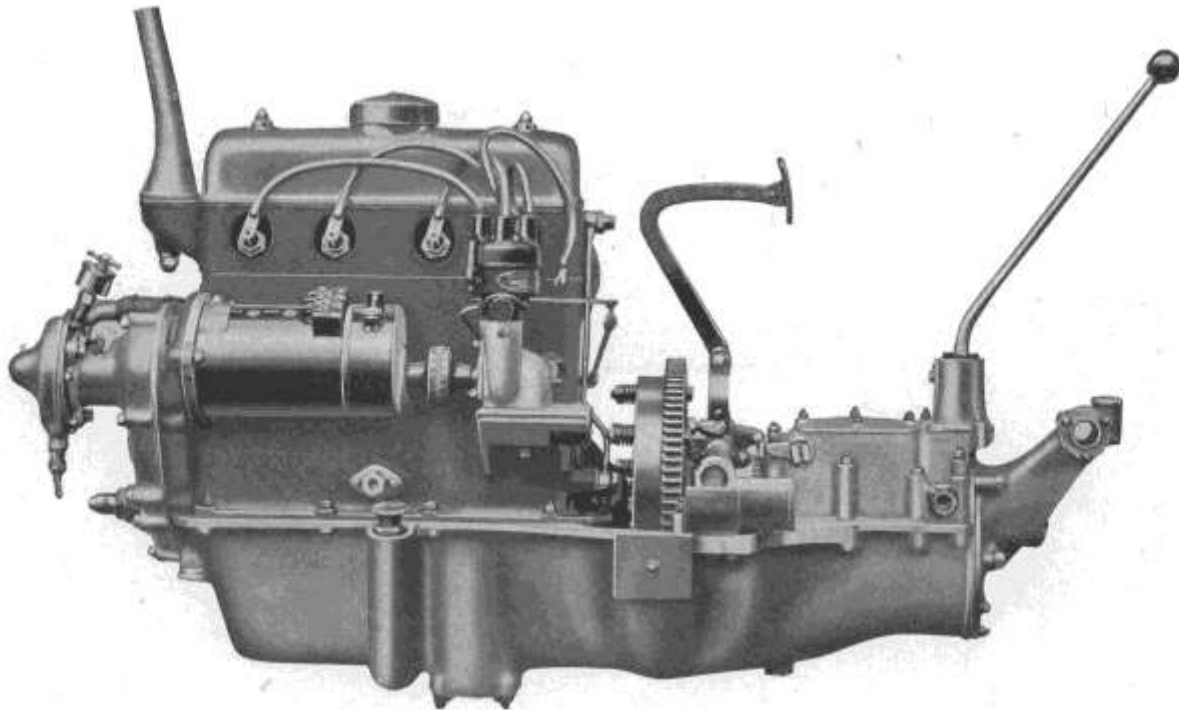


*Picturesque
Photographs
of the
10/23
Talbot*



*An Ideal
Four
Seater
Car
for the
Country
Jaunt.*





10/23 h.p. 4-Cylinder Engine Unit

Detailed Specification—Continued

GEAR BOX is a single unit with the engine, and is provided with three forward speeds and one reverse. Short shafts of large diameter carry the gears, thus avoiding any tendency to noisiness on the intermediate gears. Ball bearings are fitted throughout and provision for lubrication on the rear universal joint is made. Speedometer drive is fitted. Central change is standard. Right-hand change can be fitted at an extra cost of If required to be fitted after delivery has been taken, the extra cost is

BACK AXLE.—Banjo type pressed steel with aluminium inspection cap, forming a very strong and, at the same time, light unit. The final drive is by spiral bevel. Ball bearings are fitted throughout.

FRONT AXLE is the straight type made from "H" section special alloy steel, steering pivots are of ample dimensions and adequate means of lubrication is provided. The hubs are mounted on ball races.

SPRINGING is by $\frac{1}{2}$ -elliptic front and rear.

BRAKES.—Very efficient internal expanding type ferodo lined brakes are fitted to the rear wheels.

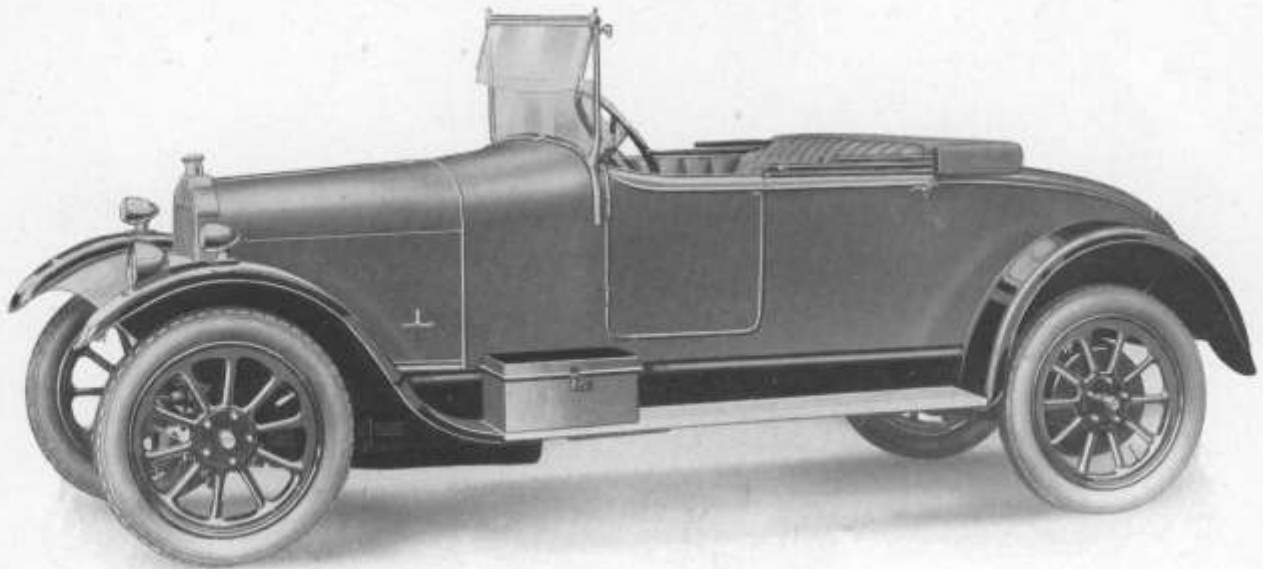
STEERING is of the irreversible worm and nut type. All moving parts being of ample dimensions.

WHEELS. Detachable steel artillery wheels are fitted with Dunlop 710×90 cord tyres.

FRAME of pressed steel, inswept at the front to allow of adequate steering lock.

PRINCIPAL DIMENSIONS.

Wheelbase	9 ft.
Track	3 ft. 11 $\frac{1}{2}$ in.
Length overall	11 ft. 4 $\frac{1}{4}$ in.
Width overall	4 ft. 5 in.
Ground clearance	7 $\frac{1}{2}$ in.
Gear ratios	Top	2nd	1st	Rev.	
			5	9·12	17·37	17·37	
Tyre sizes	710×90
Weight of chassis	8 cwt.



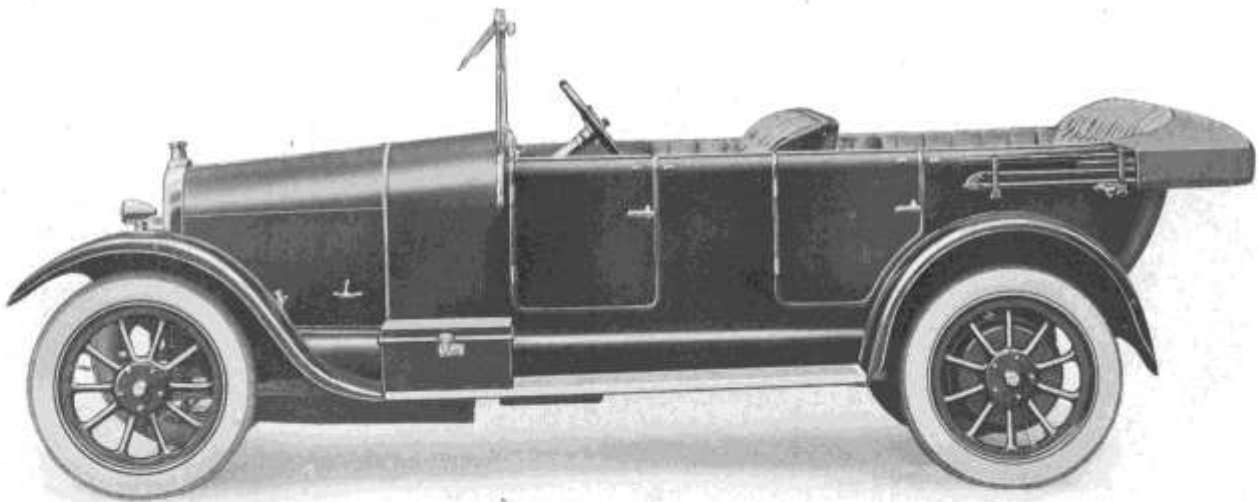
10/23 h.p. Model "K" 2-Seater -

10-23 h.p. 4-cylinder chassis fitted with 2-seater body, double dickey, hood, hood bag, side curtains, operating with the door, convenient storage for same, double wind screen, tool box, complete tool equipment, spare wheel and cord tyre, 5 lamps, electric lighting and starting, electric horn, speedometer, clock, and spring gaiters.

COLOURS—Dark Grey or Blue.

UPHOLSTERY—Dark Blue.

R.A.C. Rating, 8.9 h.p.



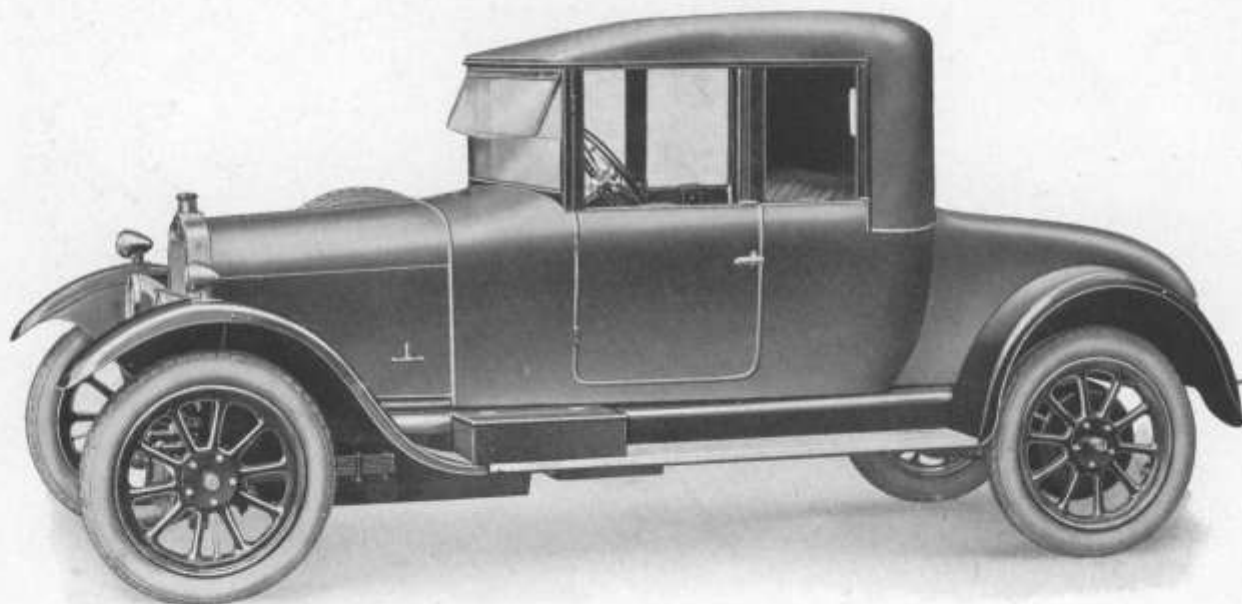
10/23 h.p. Model "D" 4-Seater Open Touring -

10-23 h.p. 4-cylinder chassis, fitted with 4-seater body, adjustable driving seat, double wind screen, one man hood, hood bag, all-weather side curtains, operating with the doors, good storage cupboard for same at back of driving seat, tool box, complete tool equipment, spare wheel and cord tyre, 5 lamps, electric lighting and starting, electric horn, speedometer, clock and spring gaiters.

COLOURS—Dark Grey or Blue.

UPHOLSTERY—Dark Blue.

R.A.C. Rating, 8·9 h.p.



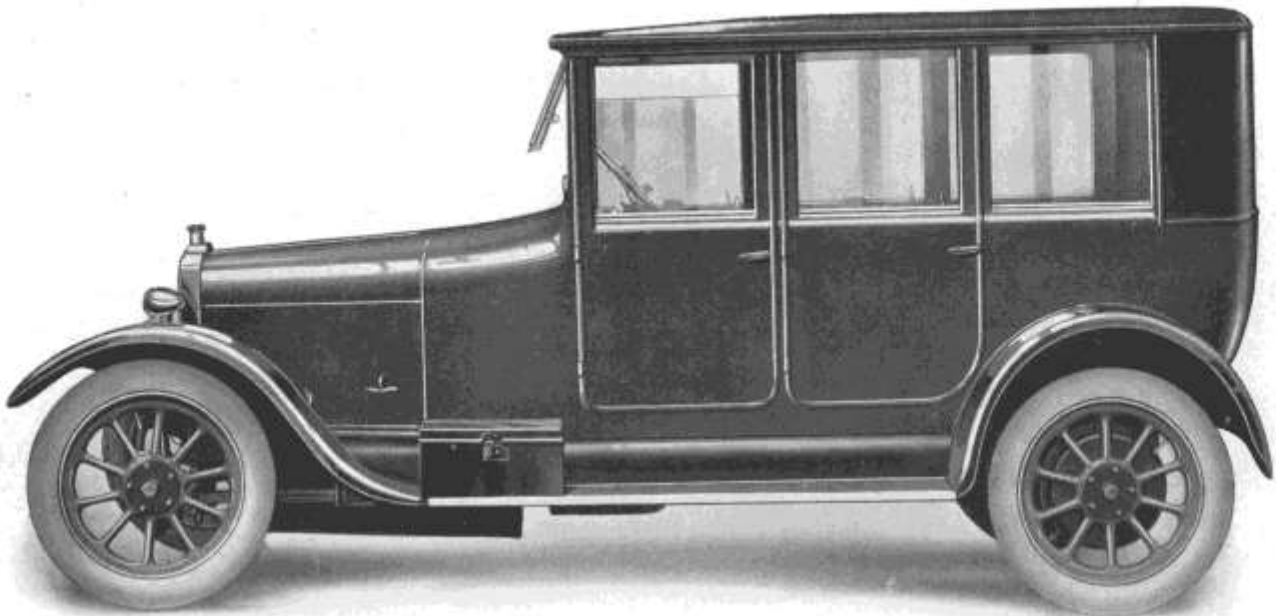
10/23 h.p. Model "H" Three-quarter Coupé Cabriolet -

10-23 h.p. 4-cylinder chassis, fitted with coachbuilt three-quarter coupé cabriolet, 2-door body, collapsible head, covered with best quality leather, lined inside with cloth, quarter lights and back light, double dickey seat, double folding wind screen, tool box, complete tool equipment, spare wheel and cord tyre, 5 lamps, electric lighting and starting, electric horn, speedometer, clock and spring gaiters.

COLOURS—Dark Grey or Blue.

UPHOLSTERY—Dark Blue.

R.A.C. Rating, 8.9 h.p.



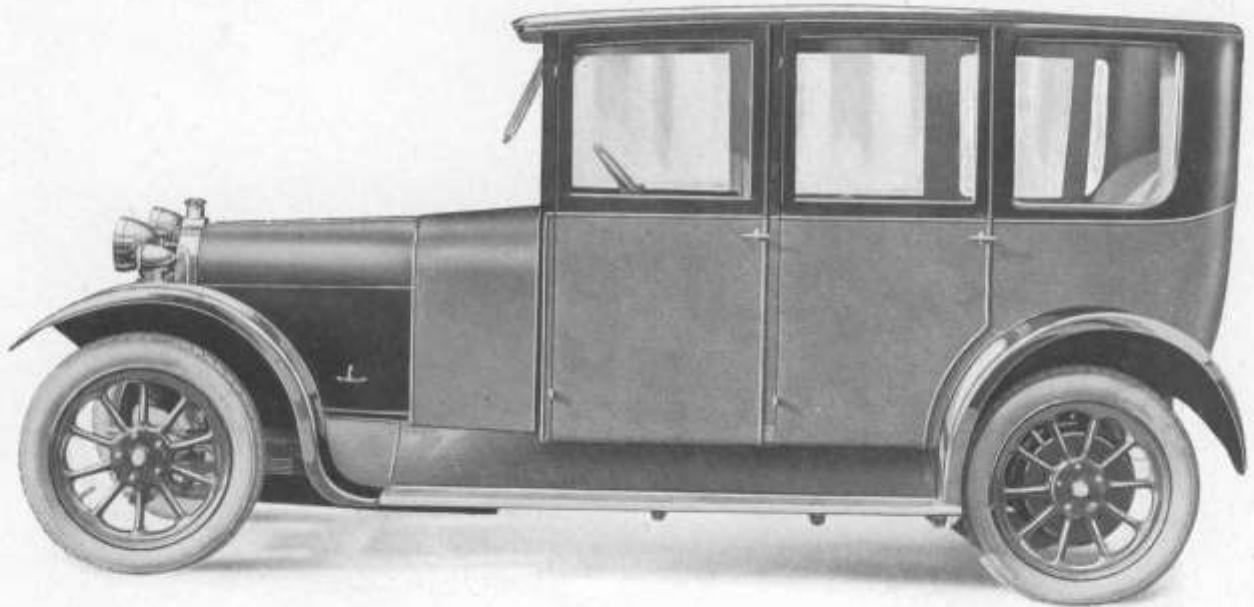
10/23 h.p. Model "J" Saloon - - -

10-23 h.p. 4-cylinder chassis fitted with coachbuilt 4-door 4-seater saloon body, upholstered in Bedford cord, cloth lined roof. Ladies' and gentlemen's companions, hat net frameless windows to all 4 doors, tool box, complete tool equipment, spare wheel and cord tyre, 5 lamps, electric lighting and starting, electric horn, speedometer, clock, spring gaiters, roof light, Hartford shock absorbers fitted to rear springs.

COLOURS—Dark Grey, Blue and Wine.

UPHOLSTERY—Bedford cord.

R.A.C. Rating, 8·9 h.p.



10/23 h.p. Model "JW" Weymann Saloon -

10-23 h.p. 4-cylinder chassis fitted with Weymann 4-door saloon, frameless windows operated by special winders, tool box, complete tool equipment, spare wheel and cord tyre, 5 lamps, electric lighting and starting, electric horn, speedometer, clock, spring gaiters, roof light, Hartford shock absorbers fitted to rear springs.

COLOURS—Dark Blue, Grey or Wine grained leather with Black-grained leather top panel.

UPHOLSTERY—Bedford cord.

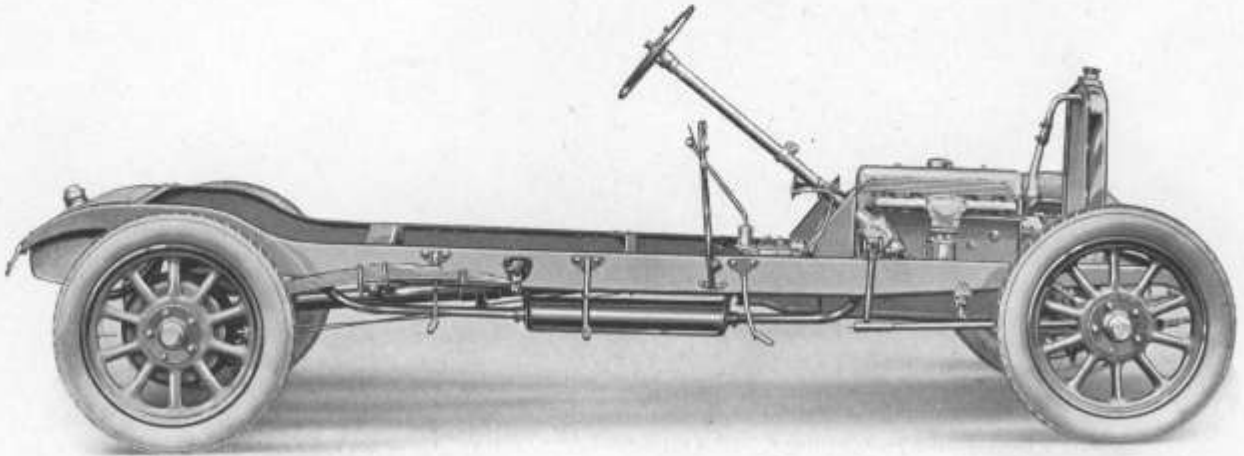
R.A.C. Rating, 8·9 h.p.



*Picturesque
Photographs
of the
10/23
Talbot*

*An Ideal
Four
Seater
Car
for the
Country
Jaunt.*





12/30 h.p. 6-Cylinder Chassis -

Detailed Specification

ENGINE.—6-cylinder monobloc casting, forming with the open clutch pit and gear box a single unit.

Bore—60.
Stroke—95.

c.c.—1,609.
R.A.C. rating—13·39.

Overhead valves are fitted in the detachable head and operated by push rods and rockers, fitted with simple means of adjustment. An oil tight aluminium cover encloses the whole of the valve gear and forms a chamber which is in direct communication with the crankcase, thus allowing the valve gear to work in an oil vapour and additionally oil is fed, under pressure, to the rockers through the hollow rocker bearing shaft.

CRANKSHAFT, which is of large diameter is carried in three bearings attached to the upper half of the crankcase. Lubrication is effected by oil being forced by a gear pump through the crankshaft which is hollow and so fed to each journal and big-end bearing.

PISTONS are of special aluminium alloy, very light in weight, and thus eliminating all vibration.

DYNAMO positively driven in tandem with the distributor.

IGNITION is the Delco Remy high tension coil and battery type. The distributor and contact breaker being mounted in a most accessible position. High tension magneto can be substituted at an extra cost of
If required to be fitted after delivery has been taken, the extra cost is

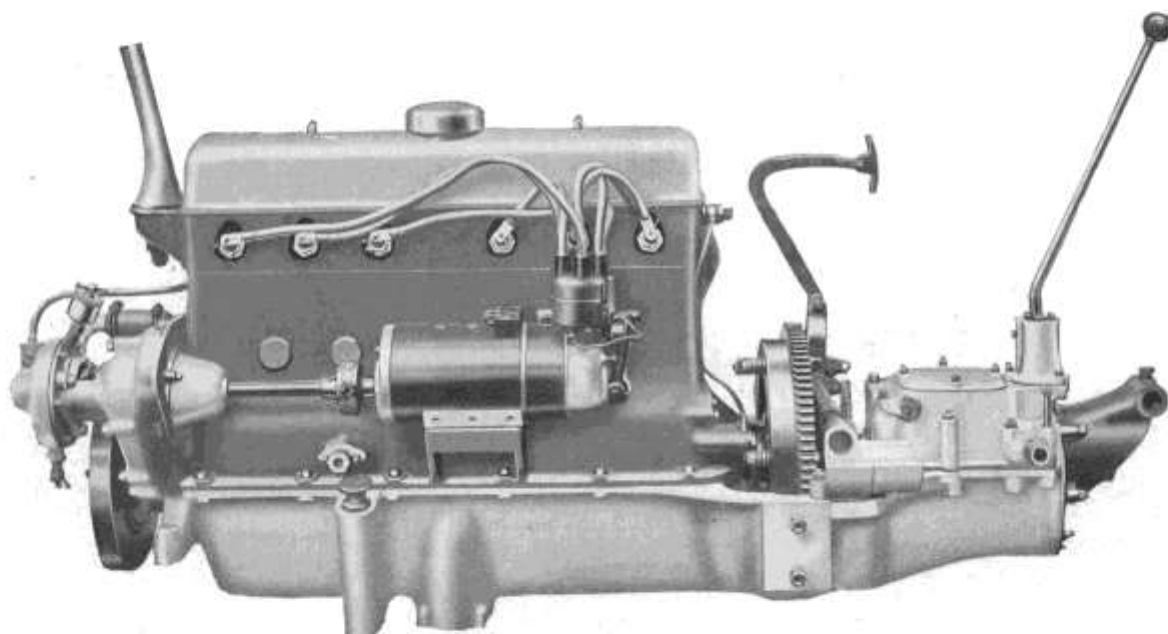
COOLING is effected by large honeycomb radiator and centrifugal water circulating pump. A fan can be fitted for tropical countries at an extra cost of If required to be fitted after delivery has been taken, the extra cost is

CARBURETTOR.—A Twin Zenith or Claudel Carburettor is fitted to an aluminium inlet pipe, the special design of which enables all gas passages to be machined, thereby ensuring an even flow and an equal distribution of gas to all cylinders. The inlet pipe is also warmed by a hot water jacket.

STARTER.—Electric starter is fitted, the pinion of which engages with teeth cut on the fly-wheel.

LUBRICATION is of the forced feed hollow crankshaft type with a gauge on the dash board indicating the pressure and a dipper on the near side of the engine, showing the amount of oil in the sump.

CLUTCH.—This is mounted in the fly-wheel and is of the single disc ferodo lined type, running dry. Adjustments can be easily carried out as the clutch runs in an open clutch pit.



12/30 h.p. 6-Cylinder Engine Unit

Detailed Specification—Continued

GEAR BOX is a single unit with the engine, and is provided with three forward speeds and one reverse. Short shafts of large diameter carry the gears, thus avoiding any tendency to noisiness on the intermediate gears. Ball bearings are fitted throughout and provision for lubrication on the rear universal joint is made. Speedometer drive is fitted. Central or right hand change speed lever optional.

BACK AXLE.—Banjo type pressed steel with aluminium inspection cap forming a very strong and at the same time light unit. The final drive is by spiral bevel. Ball bearings are fitted throughout.

FRONT AXLE is the straight type made from "H" section special alloy steel, steering pivots are of ample dimensions and adequate means of lubrication is provided. The hubs are mounted on ball races.

SPRINGING is by Cantilever rear and $\frac{1}{4}$ -elliptic front.

BRAKES.—Very efficient internal expanding type ferodo lined brakes are fitted to the rear wheels.

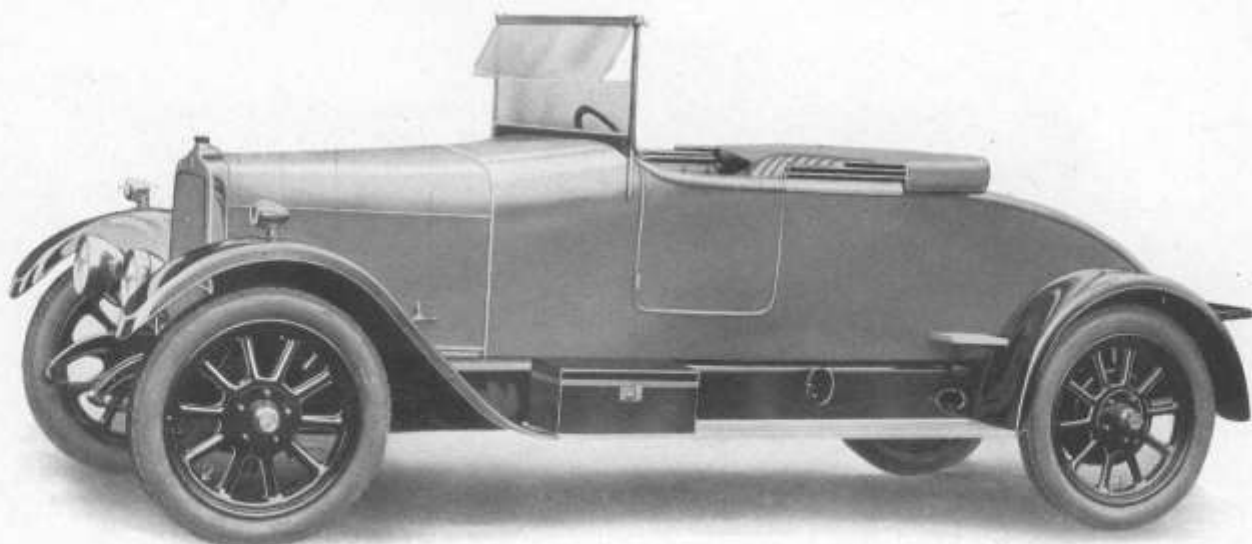
STEERING is of the irreversible worm and nut type. All moving parts being of ample dimensions.

WHEELS.—Detachable steel artillery wheels are fitted with Dunlop 765×105 cord tyres.

FRAME of pressed steel, inswept at the front to allow of adequate steering lock.

PRINCIPAL DIMENSIONS.

Wheelbase	10 ft.								
Track	4 ft. 5 in.								
Length overall	13 ft. 4 in.								
Width overall	5 ft. 1 in.								
Ground clearance	7½ in.								
Gear ratios	<table border="0" style="display: inline-table; vertical-align: middle;"> <tr> <td style="text-align: center;">Top</td> <td style="text-align: center;">2nd</td> <td style="text-align: center;">1st</td> <td style="text-align: center;">Rev.</td> </tr> <tr> <td style="text-align: center;">5</td> <td style="text-align: center;">9-12</td> <td style="text-align: center;">17-37</td> <td style="text-align: center;">17-37</td> </tr> </table>	Top	2nd	1st	Rev.	5	9-12	17-37	17-37
Top	2nd	1st	Rev.						
5	9-12	17-37	17-37						
Tyre sizes	765×105								
Weight of chassis	13½ cwt.								



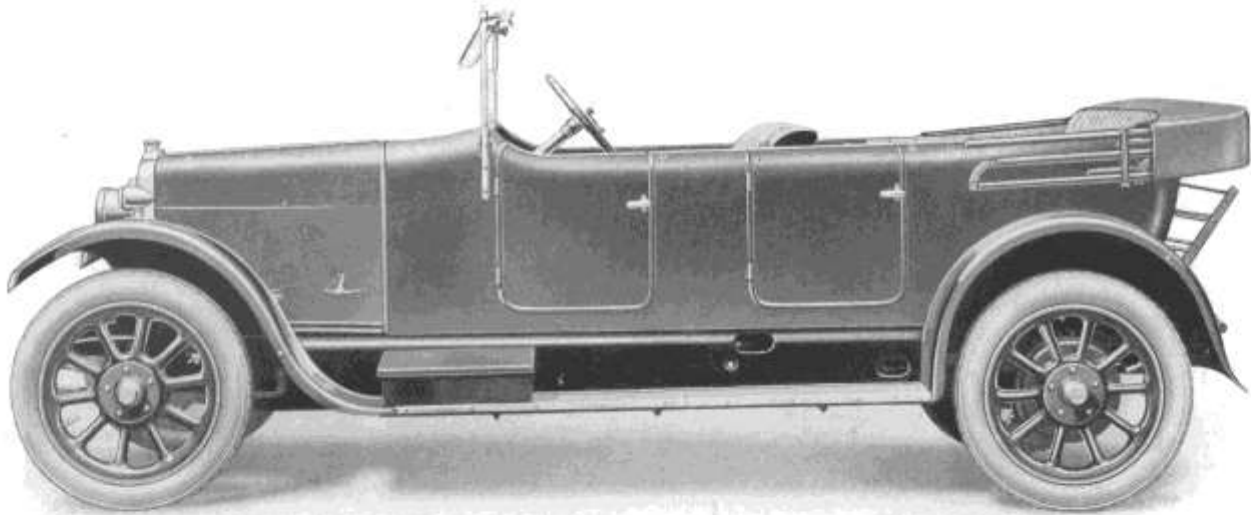
12/30 h.p. Model "N" 2-Seater -

12-30 h.p. 6-cylinder chassis fitted with wide 2-seater body, double dickey, hood, hood bag, side curtains operating with the door, ample storage for same, double wind screen, 2 tool boxes, complete tool equipment, luggage grid, spare wheel and cord tyre, 5 lamps, electric lighting and starting, electric horn, speedometer, clock, carburettor tickler for Zenith or air choke for Claudel carburettor, spring gaiters, 1 step mat.

COLOURS—Dark Grey, Blue or Wine.

UPHOLSTERY—Dark Blue.

R.A.C. Rating, 13.39 h.p.



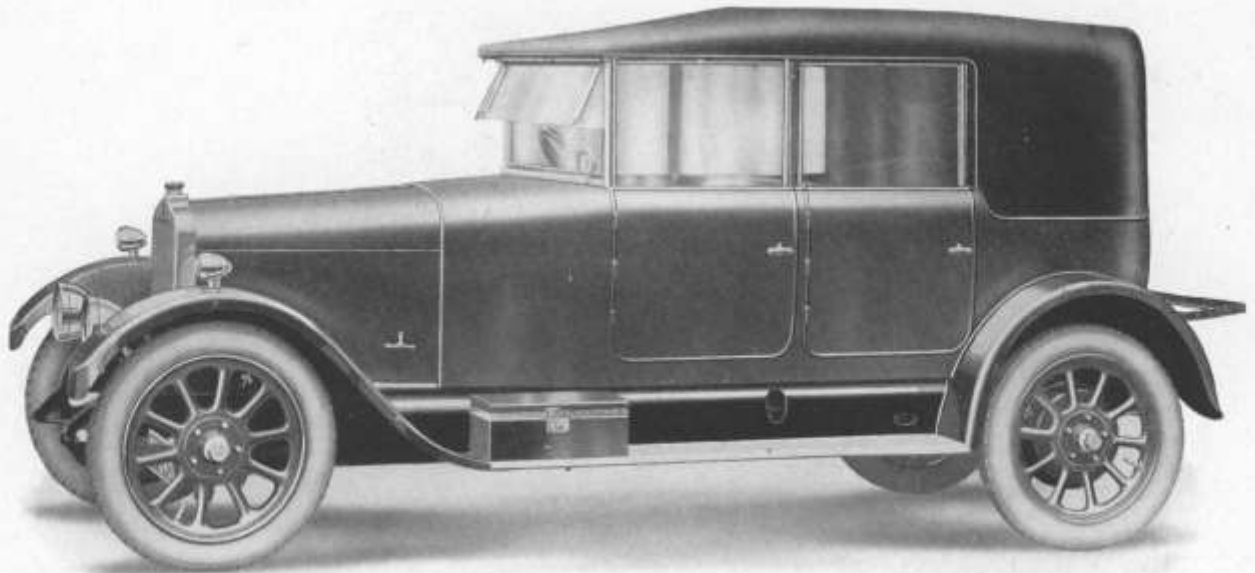
12/30 h.p. Model "F" Open Touring 4-5 Seater -

12-30 h.p. 6-cylinder chassis fitted with 4-5 seater open touring body, adjustable driving seat, one-man hood, covered with special black leather cloth, hood bag, double wind screen, all-weather side curtains, operating with the doors, ample storage for same at back of driving seat, coco mats fitted to back and front, 2 tool boxes with ample tool equipment, luggage grid, spare wheel and cord tyre, 5 lamps, electric lighting and starting, electric horn, speedometer, clock, carburettor tickler for Zenith or air choke for Claudel carburettor, spring gaiters, 3 step mats.

COLOURS—Dark Grey, Blue or Wine.

UPHOLSTERY—Dark Blue.

R.A.C. Rating, 13.39 h.p.



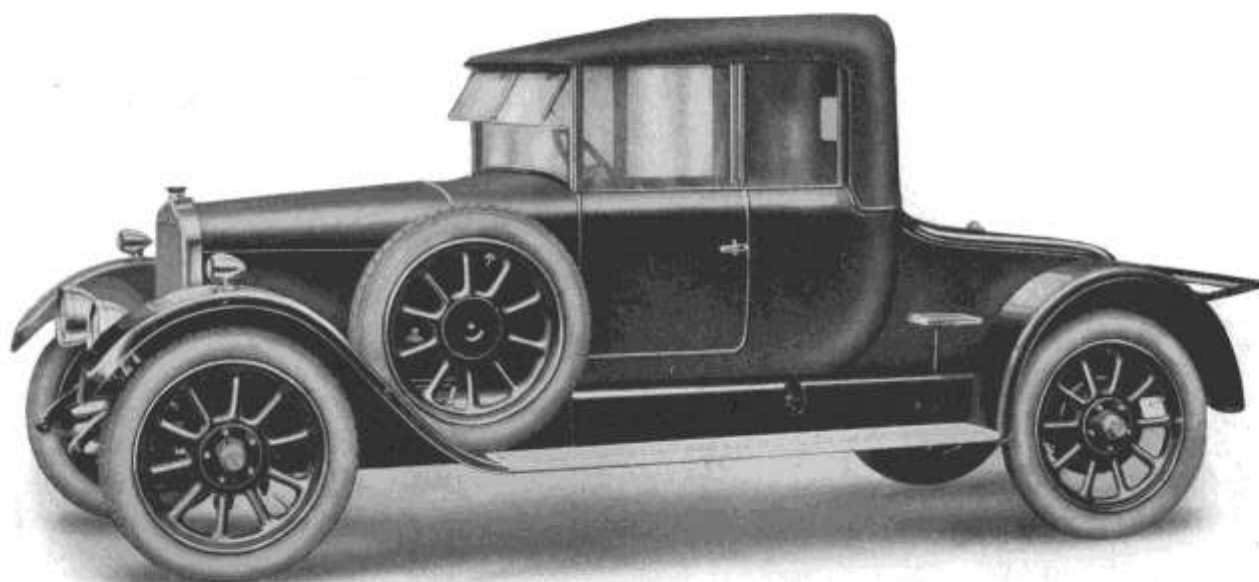
12/30 h.p. Model "L" All-Weather -

12-30 h.p. 6-cylinder chassis fitted with 4-5 seater all-weather body, Gwynne head, covered in leather cloth, with ample back light, adjustable driving seat, 4 doors, double wind screen, 2 tool boxes, complete tool equipment, luggage grid, spare wheel and cord tyre, 5 lamps, electric lighting and starting, electric horn, speedometer, clock, carburettor tickler for Zenith or air choke for Claudel carburettor, spring gaiters and step mats.

COLOURS—Dark Grey, Blue or Wine.

UPHOLSTERY—Dark Blue.

R.A.C. Rating, 13.39 h.p.



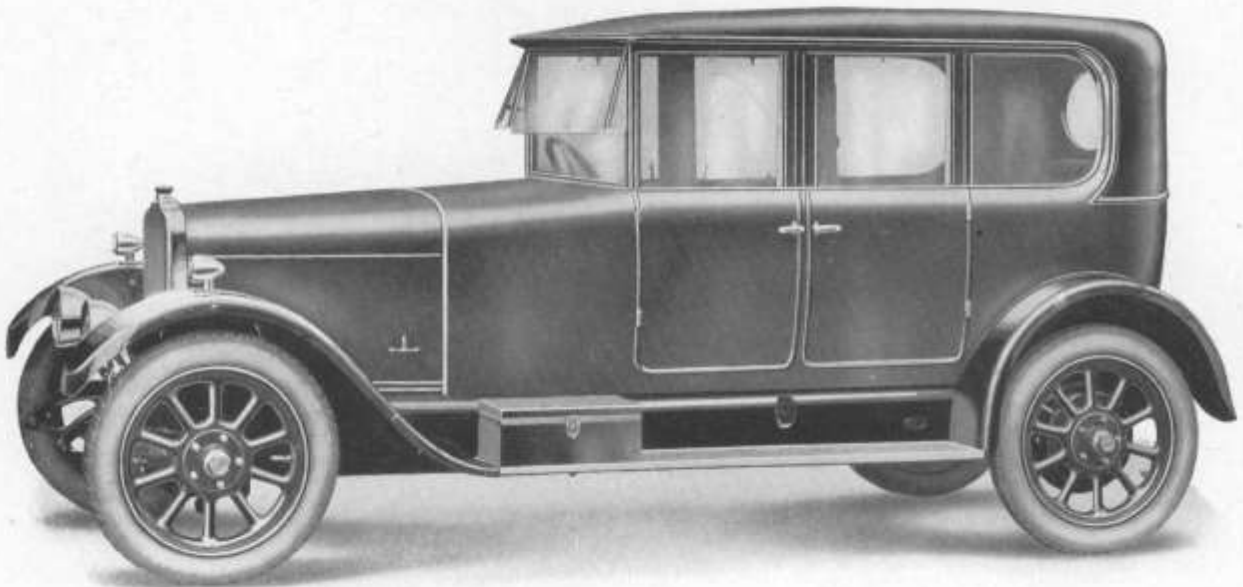
12-30 h.p. Model "M" Three-quarter Coupé Cabriolet -

12-30 h.p. 6-cylinder chassis fitted with three-quarter coupé Cabriolet, 2-door body, coachbuilt head, covered with leather cloth, three-quarter light and ample back light, double wind screen, 2 tool boxes, complete tool equipment, luggage grid, spare wheel and cord tyre, 5 lamps, electric lighting and starting, electric horn, speedometer, clock, carburettor tickler for Zenith or air choke for Claudel carburettor, spring gaiters and 2 step mats.

COLOURS—Dark Grey, Blue or Wine.

UPHOLSTERY—Dark Blue.

R.A.C. Rating, 13.39 h.p.



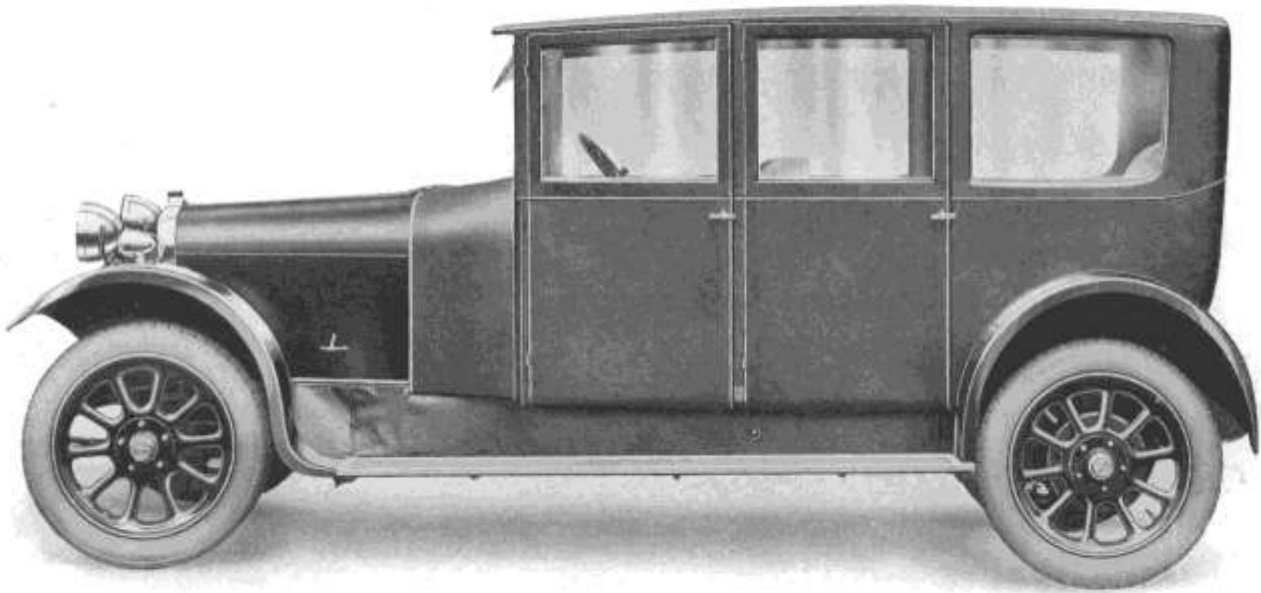
12/30 h.p. Model "P" Saloon -

12-30 h.p. 6-cylinder chassis fitted with dome roof 4-door saloon body, frameless windows, fly-up mechanism operating the same, V front double wind screen, 2 tool boxes, complete tool equipment, luggage grid, spare wheel and cord tyre, 5 lamps, electric lighting and starting, electric horn, speedometer, clock, carburettor tickler for Zenith or air choke for Claudel Carburettor, spring gaiters, 4 step mats, ladies' and gentlemen's companions.

COLOURS—Dark Blue, Grey or Wine.

UPHOLSTERY—Bedford Cord.

R.A.C. Rating, 13.39 h.p.



12/30 h.p. Model "PW" Weymann Saloon Body -

12-30 h.p. 6-cylinder chassis fitted with Weymann 4-door saloon, frameless windows, operated by special winders, 2 tool boxes, complete tool equipment, luggage grid, spare wheel and cord tyre, 5 lamps, electric lighting and starting, electric horn, speedometer, clock, carburettor tickler for Zenith, or air choke for Claudel carburettor, 4 step mats.

COLOURS—Dark Blue, Grey or Wine grained leather with black grained leather top panel.

UPHOLSTERY—Bedford Cord.

R.A.C. Rating, 13.39.



Some Opinions of the Talbot "Six-Cylinder"

"Since taking delivery of the 12-30 h.p. Talbot on Monday, I have covered 200 miles. Although the engine is not yet run in I can hardly speak highly enough of the car. Steering, springing and brakes all seem perfect. It is impossible to find fault with the car and the effortless running and feeling of solidity are great features. I consider the flexibility of the small six greatly simplifies driving, particularly in traffic."

H. G. B., July, 1923.

"... I drove the car under strictly owner-driver conditions for over 1,000 miles, mostly about Dartmoor and up and down tortuous, ill-graded, picturesque hills and descents round the coast of Cornwall, with a view to calling on the engine to do harder work than the average motorist would require of it all the year round. From start to finish the engine never faltered, never overheated, never showed any signs of being over-taxed, always accelerated easily and promptly, and maintained its form absolutely. . . The first speed will take the car up *really* severe gradients at 20 miles an hour. Here, I think, one has the secret of the exceptionally clever designing of this vehicle. . . . No hill proves tedious to climb on this family car, which has all the speed qualities needed for this class of vehicle on the flat, and which provides a quite unexpectedly spirited performance in hill climbing, which latter is matched by the excellence of the brakes."

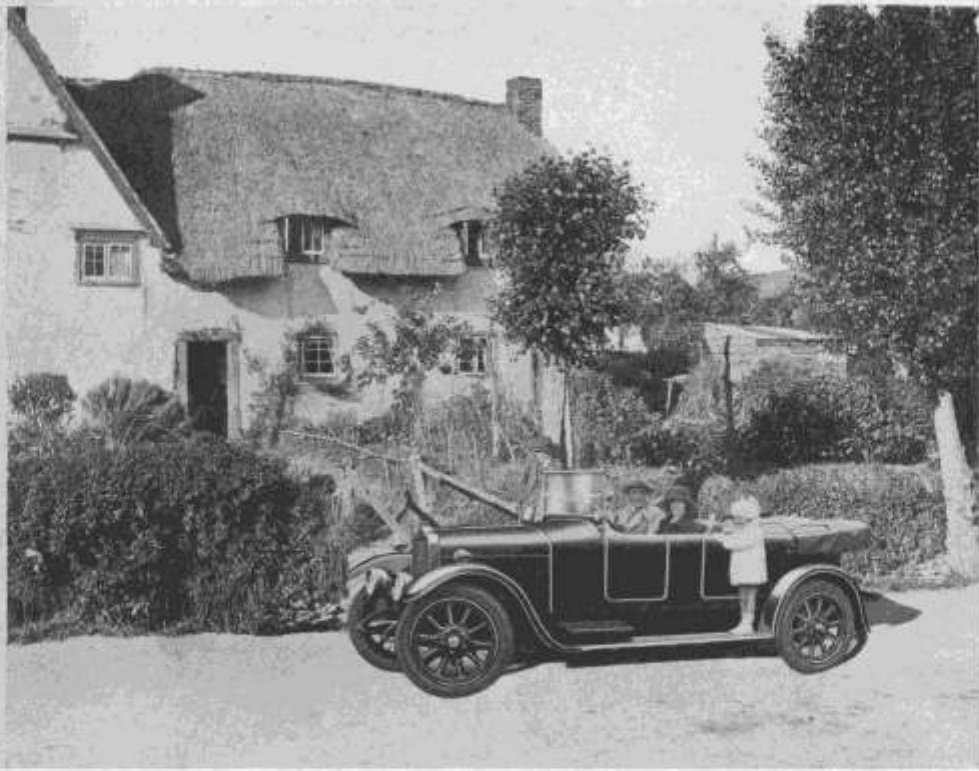
H. MASSAC BUIST, "Morning Post," Sept., 1923.

"The manner in which the engine deals with its load is little short of remarkable. For the purpose of comparison we ran the car over a route that is particularly well known to us, and over which we have driven several other six-cylinder models of far higher denomination. One point stands out very prominently, which is the capability of the Talbot for good average speeds without any degree of fussiness or any suggestion of over-driving."

"Motor," July, 1923.



*The
Six
Cylinder
Talbot.*



*a
Delightful
Car for
Touring
under any
Conditions*



TERMS OF BUSINESS AND GUARANTEE.

ALL designs, weights, measurements, prices and quantities mentioned in our catalogue must be taken as approximate. Illustrations are given as a general guide, and are not binding in detail.

DEPOSIT.—10 per cent. of the full amount to be deposited when the order is placed, the balance becoming payable on delivery of the car at our Works.

PAYMENT.—Cash on receipt of invoice with notification of the date when the car will be ready for delivery. If payment is not made within seven days of such notification, we reserve the right of selling the car.

WE DESIRE ALSO TO DRAW THE ATTENTION OF PURCHASERS TO THE FOLLOWING CONDITIONS OF SALE, AND ALSO TO THE GUARANTEE BELOW :—

" The Company reserves the right to alter its catalogues and lists, and the standard specifications stated therein, without any previous notice.

" The Company shall not be responsible for delay in delivery due to strikes, lock-outs, fire, accidents, combinations of workmen, delays in obtaining material, or other causes outside the control of the Company, and it may cancel any order which it is unable to execute within two months of the due date owing to causes falling within this clause.

" The Company shall not by naming or accepting a date or time for delivery be deemed to have undertaken to give delivery on such date or within such time, but only to have undertaken to use its best endeavours to complete the order by such date or within such time. In case delivery shall not be made within six weeks of the due date as aforesaid, the Purchaser may thereupon, if he thinks fit, give the Company 14 days' notice to deliver, and failing delivery, may cancel the order for the same, but shall have no claim against the Company for damages or compensation.

" All prices quoted in the Company's Catalogues are for delivery at the Company's Works, and all orders for cars or chassis accepted by the Company shall be paid for in cash at its Registered Office, or to its authorised representative. Payment to be made on or before delivery. After delivery all cars and chassis shall be at the Purchaser's risk. If a car or chassis is ready for delivery and paid for, but delivery is postponed at the Purchaser's request, same shall be at the Purchaser's risk as from the day of payment.

" The Purchaser shall accept and pay for the car or chassis ordered by him when same is ready for delivery.

GUARANTEE.

ALL TALBOT CARS are sold without express or implied guarantee of their fitness or otherwise : but in case of breakage of any part within six months from date of sale, owing to defective material or workmanship, proved to our satisfaction, the defective part shall be repaired, or a new one supplied, free of charge. The part to be returned to us, carriage paid, when claim is made. The six months is from the date of the sale by us, but if the Car is sold by our Agent, and it has not been previously used, the period dates from the date of sale by our Agent. Tyres, electrical fittings, and accessories, not being made by us, are sold without recourse against us under any circumstances.

The term Agent is used in a complimentary sense only, and those firms we style our Agents are not authorised to advertise, incur any debts or transact any business whatsoever on our account, nor are they authorised to give any warranty or make any representations on our behalf other than those contained in the above Guarantee.

